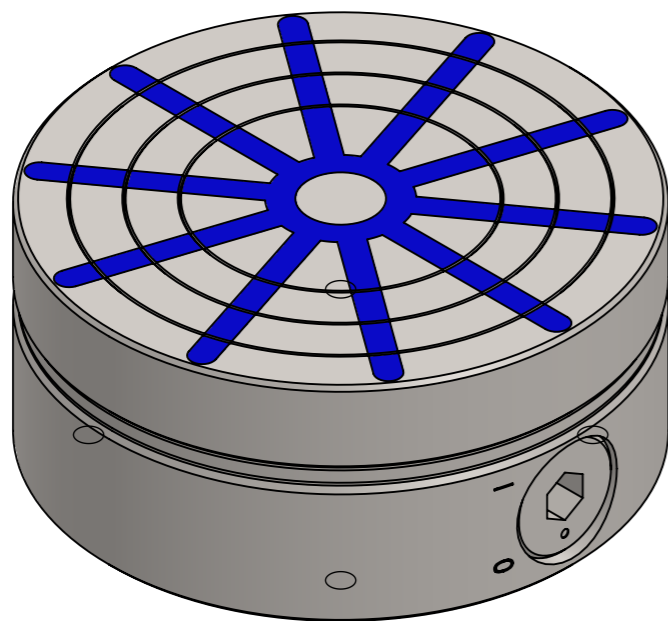
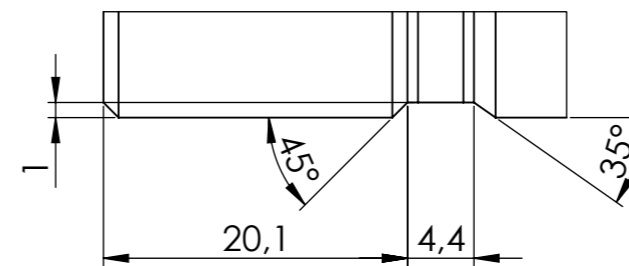


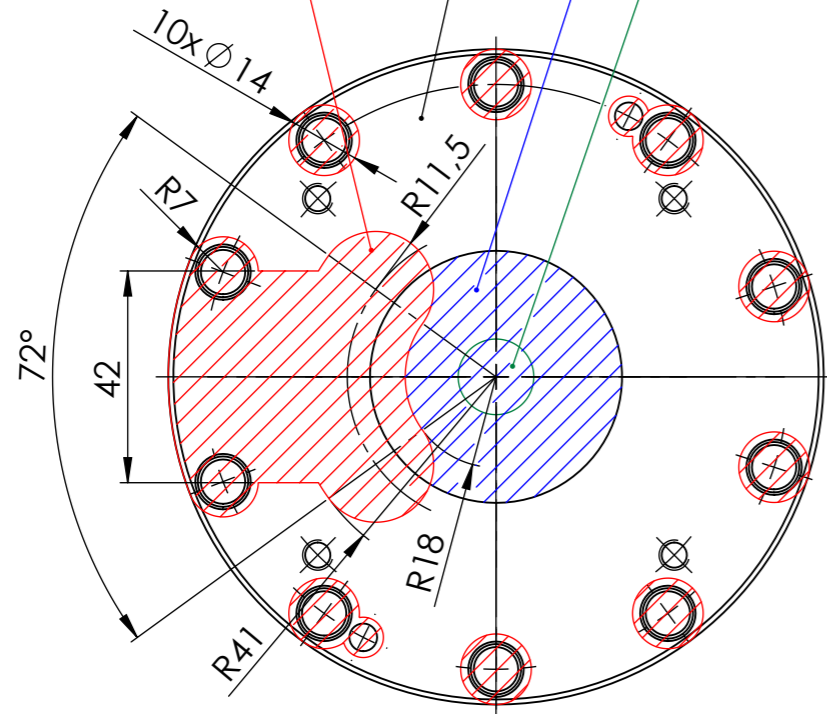
DETAIL A
2 : 1



| | | | | | | | |
|--|--------|----------------------|------------|--------------------|--|--------------|---------------------|
| Schutzvermerk nach DIN ISO 16016 beachten! Nachdruck nur mit unserer Genehmigung! | | | | 3,2 / -0,05 / -0,2 | tolerance | material: | weight: 5.50 |
| All rights reserved according to DIN ISO 16016! Reprint with our permission only! | | | | | ISO 7168 M | drawing no.: | 0019447 |
| | | date | name | | description: RS 13 Magnetrundfutter | | |
| | | drawn | 12.03.2024 | TW | | | |
| | | appr. | 12.03.2024 | TW | | | |
| | | www.flraig-te.de | | | part no.: | 210313 | sheet 1 / 2 |
| | | | | | scale: | 1:1.5 | Status: Freigegeben |
| rev. | change | date | name | | | | |

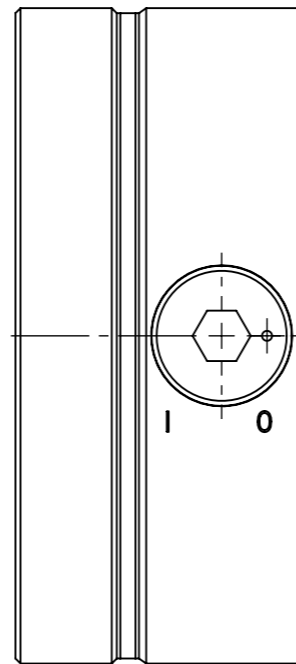
Maximum drill depth= 25mm

NO DRILL ZONES!!!



Maximum drill depth= 20mm

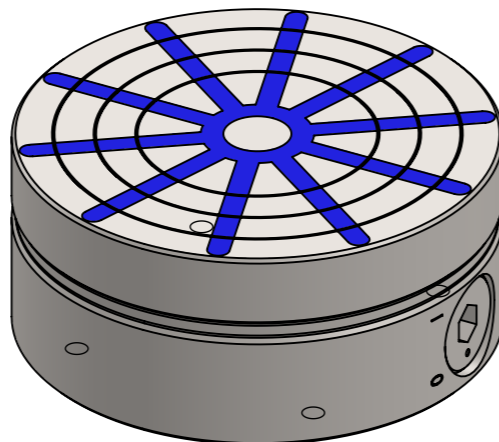
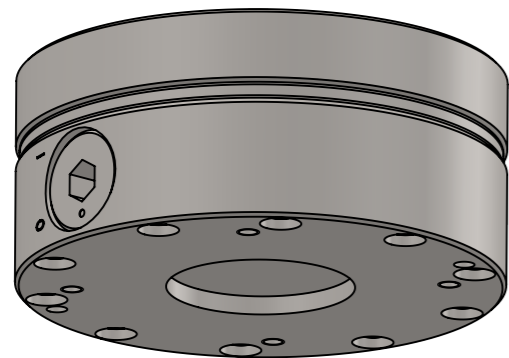
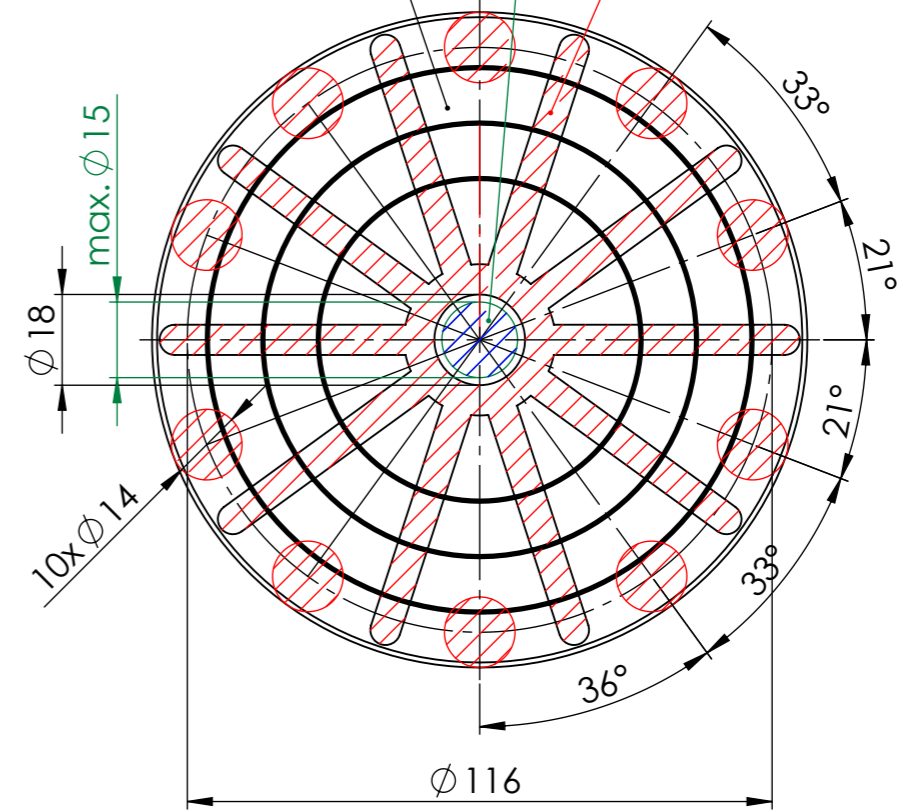
Maximum drill depth= Through



Maximum drill depth= 15mm

Maximum drill depth= Through

NO DRILL ZONES!!!



| | | | | | | | |
|--|--------|------|------|----------------------|------------|--|---------------------|
| Schutzvermerk nach DIN ISO 16016 beachten! Nachdruck nur mit unserer Genehmigung! | | | | | tolerance | material: | weight: 5.50 |
| All rights reserved according to DIN ISO 16016! Reprint with our permission only! | | | | | ISO 7168 M | drawing no.: 0019447 | |
| | | | | date | name | description: RS 13 Magnetrundfutter | |
| | | | | drawn 12.03.2024 | TW | | |
| | | | | edit 12.03.2024 | | | |
| | | | | appr. 12.03.2024 | TW | | |
| | | | | www.flraig-te.de | | part no.: 210313 | sheet 2 / 2 |
| rev. | change | date | name | | | scale: 1:1.5 | Status: Freigegeben |